

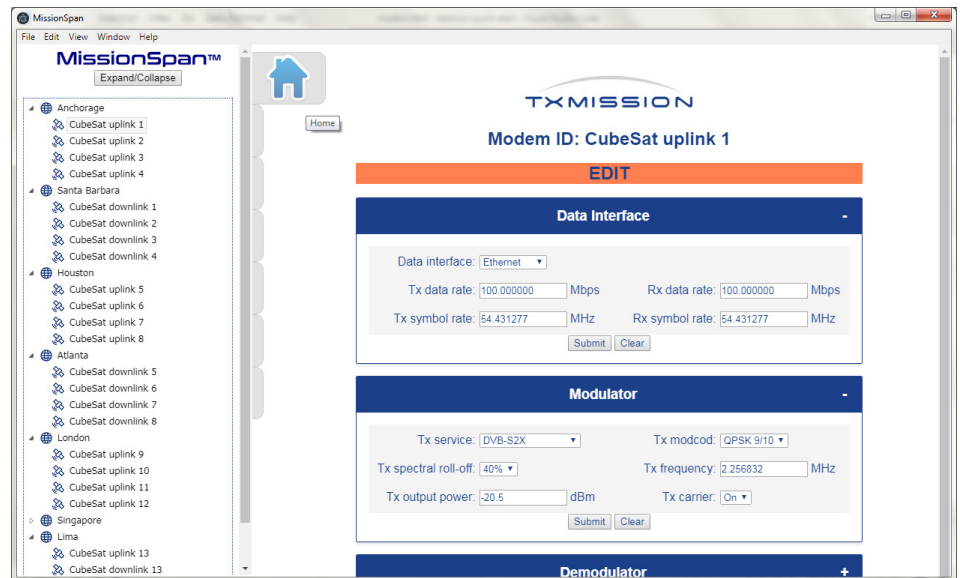
# TXMISSION

## MissionSpan™ Network Management System

*MissionSpan™ is a novel satellite network management software application that runs on standard Linux, Windows and Apple Mac computers (it does not require the use of a web browser).*

*It incorporates an intuitive navigation menu system that provides operators with instant connectivity to satellites and ground stations.*

*MissionSpan™ provides finger-tip control over all network equipment, including onboard and ground station satellite modems, routers and switches. It constantly updates equipment status in the background, allowing operators to monitor the quality of satellite services and to view individual equipment alarms.*



### Overview

MissionSpan™ NMS has been designed to control one or more entire constellations of smallsats from a single application. In keeping with the ethos of the smallsat community, our NMS is lightweight and focuses on providing essential control in a user-friendly manner.

MissionSpan™ provides a highly configurable user interface that includes an easy-to-navigate site map. Operators can navigate to any site, ground station or satellite service at the click of a button. Automatic status polling is supported for all devices, giving instant visibility of all system alarms.

MissionSpan™ runs on low-cost, off-the-shelf computer hardware and is compatible with a variety of operating systems. As much or as little of the network can be connected as desired; for example, to minimize satellite bandwidth usage network control can be limited to just the ground stations.

### Features

- **Centralized monitoring and control of all ground and satellite network equipment**
- **Support for up to 10,000 satellites in up to 100 different constellations**
- **Multi-operator application with secure individualised operator login**
- **Continuous background status polling and alarm reporting of all equipment**
- **Application runs on standard Windows, Linux and macOS computers**
- **Virtual Network Operator (VNO) support**
- **Based on open standards that allow easy integration of third-party equipment**
- **Requires minimal setup and learning**

# MissionSpan™ Network Management System

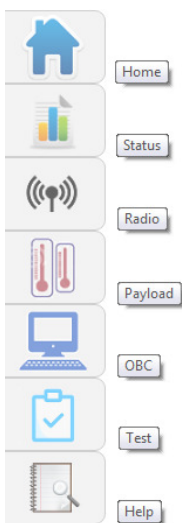
## Shared Operator Control

MissionSpan™ supports an underlying transactional database that stores the network configuration details. If desired, an operator can have a personal copy of the database installed on their computer and work in complete isolation. Alternatively, all operators can access a single copy of the database on a shared network drive. Sharing the database ensures that any changes made to the network topology, such as the addition of new sites or changes to IP addresses, will be propagated to all operators in real time.

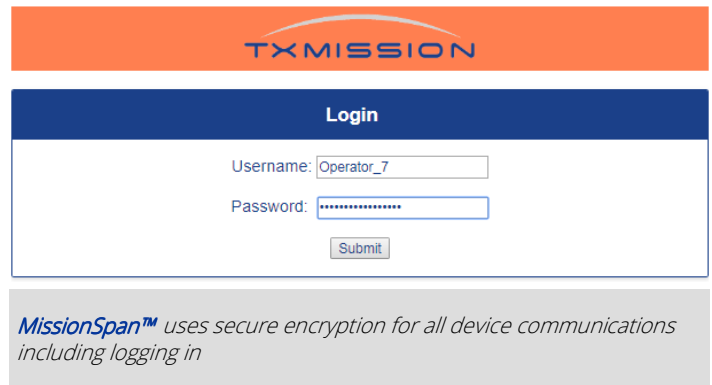
## Virtual Network Operation

MissionSpan™ supports the concept of allowing third parties a controlled degree of access to the network. The third party can be given restricted visibility of the physical network and customized login credentials that limit what operations they can perform on a specific part of the network.

This feature, referred to as Virtual Network Operator (VNO) support, allows the network owner to subdivide the network and lease network services to other organisations without compromising network security.



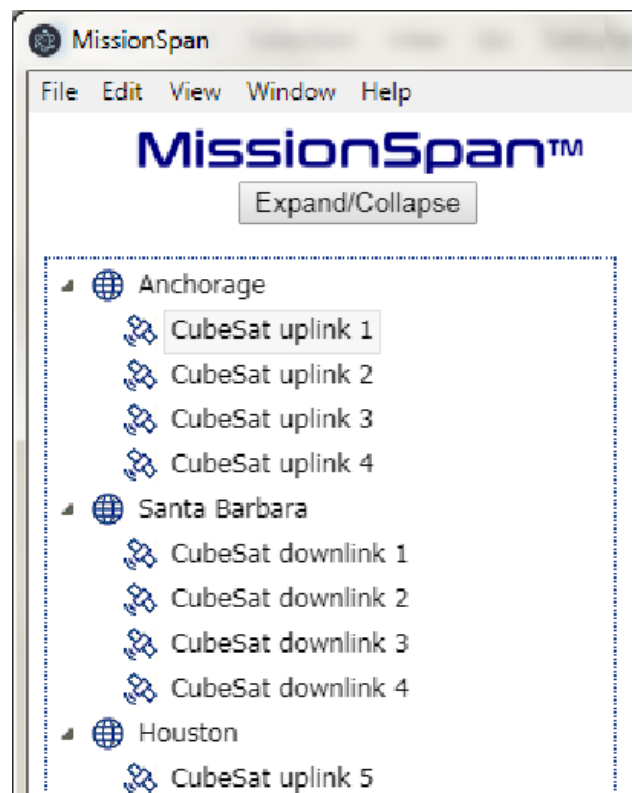
The *MissionSpan™* user interface supports a pop-out menu for easy navigation to the various menu pages on each *TXMission* device. All pages use collapsible/expandable menus to allow the information that is being viewed to be tailored to just what is required at any point in time



## Network Navigation

The user creates a navigation tree by entering the details of all the devices in the network, including IP addresses and device login credentials.

Connections to all the network devices are made and maintained automatically, regardless of whether they are satellite or terrestrial based.

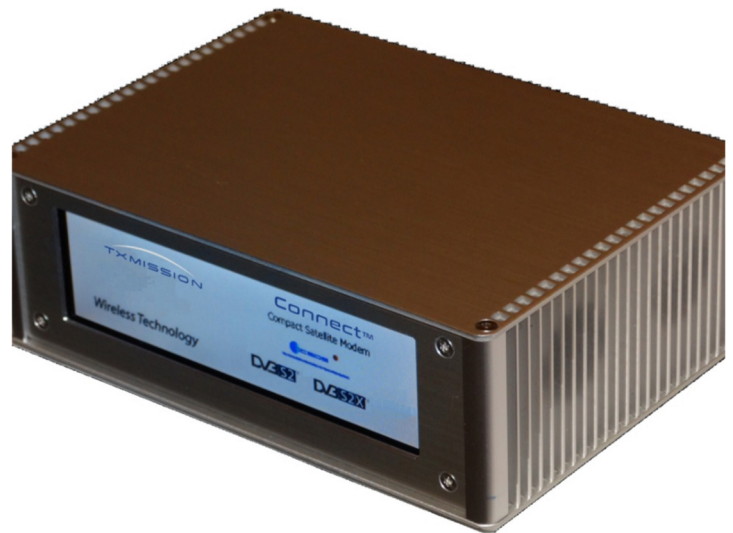


*MissionSpan™* uses secure encryption for all device communications including logging in

# MissionSpan™ Network Management System

**Ordering Information: Please select from the following options when placing an order**

Feature		Options	Description
Number of devices to be controlled	Select 1 option	Up to 10	Allows control of up to 10 network devices
		Up to 50	Allows control of up to 50 network devices
		Up to 100	Allows control of up to 100 network devices
		Up to 500	Allows control of up to 500 network devices
		Up to 1,000	Allows control of up to 1,000 network devices
		Up to 10,000	Allows control of up to 10,000 network devices



*MissionSpan™ is compatible with our Quest™ onboard smallsat modem (left-hand side) and Connect™ ground station modem (right-hand side)*

For more information, including pricing, or to place an order, please contact us directly at:

**TXMission Inc**

30 S. Calle Cesar Chavez, Suite D  
 Santa Barbara  
 CA 93103, USA

[sales@txmission.com](mailto:sales@txmission.com)

**+1 805 965 3669**

**European office:**

CP House, Otterspool Way  
 Watford  
 Herts WD25 8HU, UK

[sales@txmission.com](mailto:sales@txmission.com)

**+44 (0)1923 889542**